

WORK AND INFORMATION TO BE ADVISED TO THE MAIN CONTRACTOR (BUILDER)

PROVIDE ALL THE INFORMATION TO THE MAIN CONTRACTOR WHICH IS NECESSARY FOR THE INSTALLATION OF THE LIFT SERVICE SPECIFIED HEREIN.
 IN PARTICULAR THIS INFORMATION INCLUDES:
 a) LOCATIONS AND SIZE OF ALL PENETRATIONS IN THE STRUCTURE AND BUILDING FABRIC.
 b) THE DELIVERY TIME FOR ALL MAJOR ITEMS OF PLANT.

SYSTEM GUARANTEES

THE LIFT SERVICES SUBCONTRACTOR SHALL GUARANTEE THAT THE PLANT, WHEN INSTALLED AND OPERATED IN ACCORDANCE WITH THE OPERATING AND MAINTENANCE MANUAL, WILL PERFORM THE FOLLOWING:

A) THAT THE CAPACITY PERFORMANCE OF THE EQUIPMENT USED IN THE INSTALLATION SHALL NOT BE LESS THAN THE FIGURES STATED WITHIN THE SPECIFICATION, THIS DRAWING AND/OR SCHEDULES, WHEN OPERATING UNDER THE SPECIFIED CONDITIONS.

B) THE LIFT SERVICES SUBCONTRACTOR SHALL GUARANTEE THAT THE EQUIPMENT IS INSTALLED AND COMMISSIONED IN ACCORDANCE WITH THE RECOMMENDATIONS OF THE MANUFACTURERS OF SUCH EQUIPMENT.

C) NOISE AND VIBRATION
 THE LIFT SERVICES SUBCONTRACTOR SHALL TAKE THE NECESSARY PRECAUTIONS THROUGHOUT THE INSTALLATION TO ELIMINATE NOISE AND VIBRATION.
 THE LIFT SERVICES SUBCONTRACTOR SHALL ENSURE THAT THE NOISE LEVEL DUE TO THE PASSENGER LIFTS SHALL NOT EXCEED NR40 IN EACH OCCUPIED AREA.

D) EQUIPMENT WARRANTY
 ALL EQUIPMENT SHALL BE WARRANTED AGAINST DEFECTIVE WORKMANSHIP AND MATERIALS FOR A PERIOD OF TWELVE MONTHS FROM THE DATE OF PRACTICAL COMPLETION.
 THE LIFT SERVICES SUBCONTRACTOR'S TENDER SHALL INCLUDE FOR EXTENDING THE WARRANTY OF ANY EQUIPMENT TO THE ABOVE WARRANTY PERIOD SHOULD THE MANUFACTURER PROVIDE A LESSER WARRANTY PERIOD.

WORK BY MAIN CONTRACTOR (BUILDER)

THE FOLLOWING WORK AND/OR PROVISIONS RELATED TO THE LIFT SERVICE SHALL BE THE RESPONSIBILITY OF THE MAIN CONTRACTOR AND SHALL NOT FORM PART OF THE LIFT SERVICES SUBCONTRACT.

IT SHALL BE THE LIFT SERVICES SUBCONTRACTOR'S RESPONSIBILITY TO ENSURE THAT THIS WORK AND/OR PROVISIONS ARE CARRIED OUT TO THE LIFT SERVICES SUBCONTRACTOR'S SATISFACTION AND TO THE SATISFACTION OF THE SUPERINTENDENT.

1) PROVISION OF THREE (3) PHASE ELECTRICAL POWER SUPPLY IN FIRE RATED CABLES TERMINATING AT THE FIRST FLOOR LANDING, OR WHERE NOMINATED BY THE LIFT SERVICES SUB CONTRACTOR.

2) PROVIDE WATERPROOF SHAFT TO COMPLY WITH LIFT CODE AS1735. THE SHAFT SHALL BE SQUARE, PLUMB AND FLUSH WITHIN THE STRUCTURAL SUPPORTS AND WITH AN ALLOWABLE BUILDING TOLERANCE OF +25MM. SHAFT CONSTRUCTION SHALL ATTENUATE VIBRATIONS AND SOUND INTO THE BUILDING TO BELOW 40 DBA.

3) PROVIDE ALL PENETRATIONS AND CHASES IN ACCORDANCE WITH THE LIFT SERVICES SUBCONTRACTOR'S WORKSHOP DRAWINGS. THIS SHALL INCLUDE DOOR FRAMES, SILLS, BUTTON BOXES AND CONDUITS.

4) PROVIDE GUARDS TO LIFT DOOR OPENINGS IN ACCORDANCE WITH AS4431

5) PROVIDE HOISTING BEAMS AT THE TOP OF THE LIFT SHAFT TO SUPPORT THE LOAD NOMINATED BY THE LIFT SERVICES SUBCONTRACTOR

6) PROVIDE ACCURATE GRID, DATUM AND R.L. LINES

7) BUILD IN INSETS PROVIDED BY THE LIFT SERVICES SUB CONTRACTOR

8) MAKE GOOD TO DOOR FRAMES AND APPOINTMENTS AND ALL HOLES IN SHAFT WALLS. ALL DOOR FRAMES AND SILLS MUST BE PROTECTED, PROPERLY BRACED AND CAREFULLY GROUTED. ALL CEMENT TO BE CLEANED OFF DOORS AND FRAMES.

9) PROVIDE SPACE FOR STORAGE OF LIFT EQUIPMENT, ALL TOOLS AND SITE PERSONNEL.

10) PROVISION OF TELEPHONE CABLING TO THE LIFT CONTROL PANEL.

EXTENT OF WORK - LIFT

1) PROVISION OF ONE (1) OFF 1.0 m/s ELECTRIC DRIVEN, GEAR LESS OVERHEAD TRACTION PASSENGER LIFTS, WHICH DOES NOT REQUIRE A LIFT MACHINE ROOM AS THE OTIS GEN2 FOCUS/COMMERCIAL-LD MACHINE ROOM LESS RANGE OR EQUAL APPROVED MANUFACTURER.

PERTINENT DETAILS FOR LIFT:-

- a) TWO(2) FLOORS SERVED
- b) TRAVEL DISTANCE IS 3000 mm
- c) LIFT PIT OF 1300 mm
- d) INTERNAL SHAFT SIZE OF 2300 mm WIDE x 2500 mm DEEP.
- e) CENTRAL DOOR OPENING OF 900 mm WIDE x 2100 mm HIGH
- f) INTERNAL CAR SIZE OF 1100 WIDE x 2100 DEEP x 2300 HIGH
- g) RATING OF 1,000 KG (13 PERSONS)
- h) CONTROL BY MICRO COMPUTER SYSTEM LOCATED AT THE TOP FLOOR SERVED DOOR FRAME
- i) LANDING DOORS SHALL BE TWO PIECE, CENTER OPENING BRUSHED STAINLESS STEEL
- j) SIGNALISATION:
 CAR OPERATING PANEL ON SIDE WALL AND BRUSHED STAINLESS STEEL LANDING WITH RECESS MOUNTED CALL STATIONS WITH DOT MATRIX DIRECTION AND INDICATION ON ALL FLOORS
- k) CAR INTERIOR:
 FRONT WALL - BRUSHED STAINLESS STEEL,
 CEILING - BRUSHED STAINLESS STEEL WITH HALOGEN LIGHTING,
 WALL PANELS - LAMINATE TO BE SELECTED BY THE BUILDER,
 REAR WALL - MIRROR FULL HEIGHT,
 SKIRTING - BRUSHED STAINLESS STEEL
 FLOOR - VINYL TILES WITH COLOUR AND TYPE TO BE SELECTED BY THE ARCHITECT.
- l) TELEPHONE LINE IN THE LIFT CAR CONNECTED TO A DESIGNATED SECURITY COMPANY.
- m) THE LIFT SHALL BE FITTED WITH FACILITIES FOR PEOPLE WITH DISABILITIES AS NOTED IN CLAUSE E3.6 OF THE BUILDING CODE OF AUSTRALIA:
 i.e. - MANDATORY HANDRAILS
 - MINIMUM FLOOR DIMENSIONS OF 1450mmWIDEx200mmDEEP
 - MINIMUM CLEAR DOOR OPENING OF 900mm
 - FITTED WITH A SERIES OF DOOR OPENING SENSORY DEVICES AND
 - COMPLYING CAR BUTTONS
- n) HEADROOM OF 3,750mm

2) PROVIDE AND INSTALL TWO (2) 1x28W BATTEN FLUORESCENT LIGHTS C/W WIRE GUARD PROTECTION EVENLY SPACED IN THE LIFT SHAFT. POWER TO ORIGINATE AND SWITCHED FROM LIFT CONTROL PANELS.

3) PROVIDE AND INSTALL ONE(1) WALL MOUNTED DOUBLE GENERAL PURPOSE POWER OUTLET IN THE LIFT PIT WITH POWER CIRCUIT ORIGINATING FROM THE LIFT CONTROL PANEL.

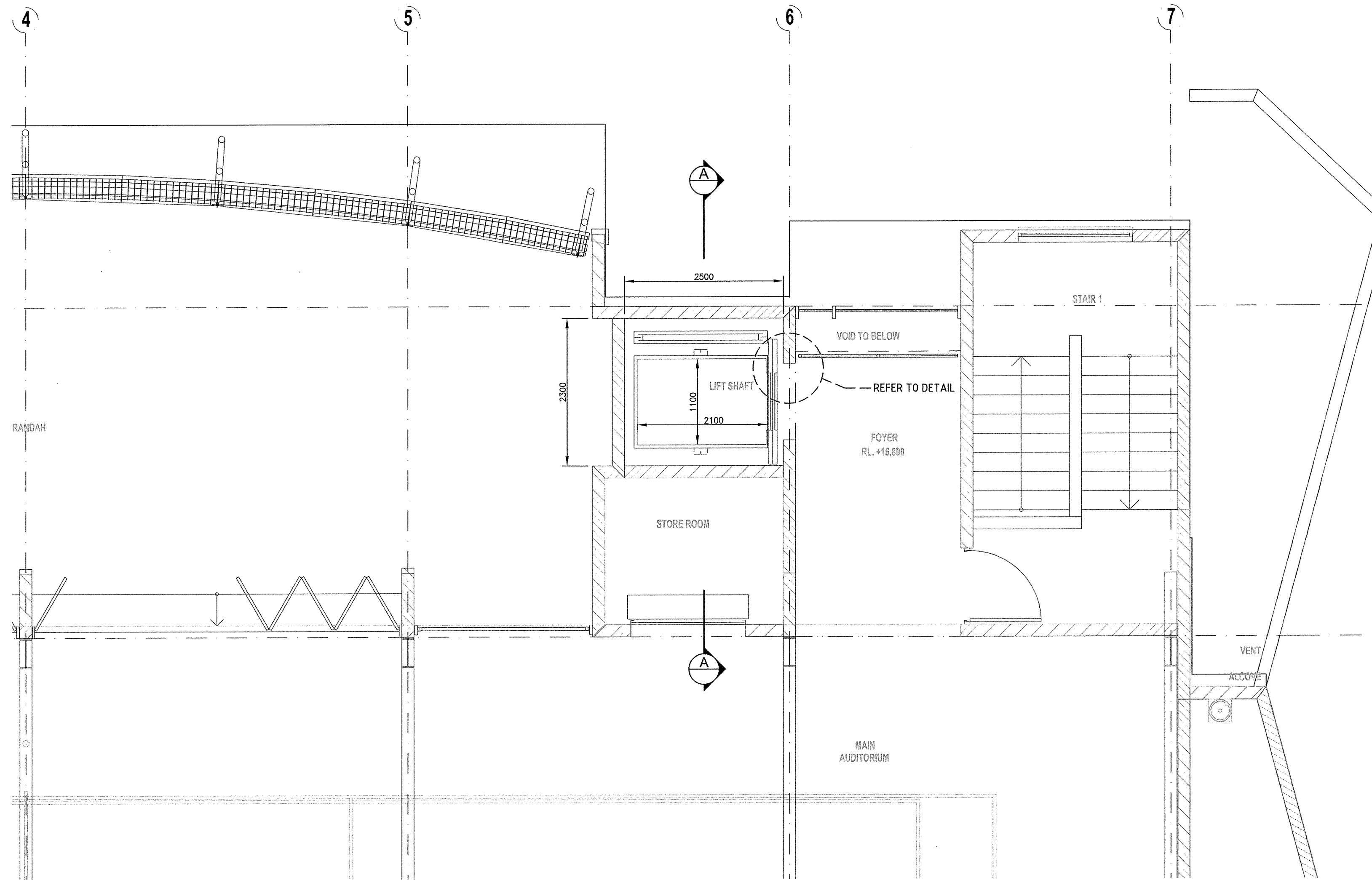
4) FOUR (4) OFF COMPLETE SETS OF WORKSHOP DRAWINGS AT SCALE OF 1:50 FOR APPROVAL, INCLUDING ELECTRICAL AND CONTROL DIAGRAMS.

5) THREE (3) OFF COMPLETE SETS OF HARD BACKED MAINTENANCE AND OPERATING MANUALS WHICH SHALL INCORPORATE AS INSTALLED DRAWINGS

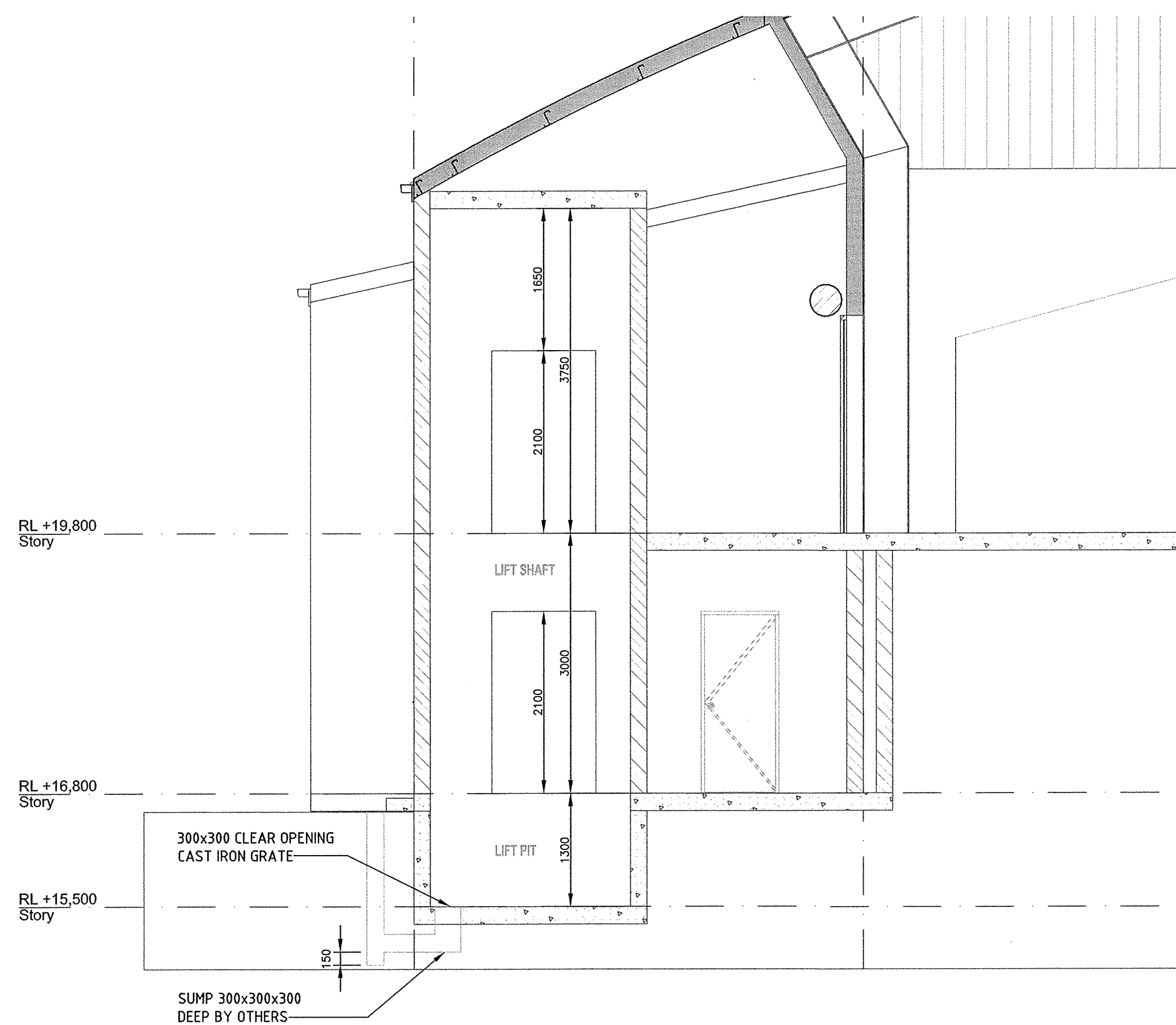
6) WARRANTY ALL EQUIPMENT AGAINST DEFECTIVE MATERIALS AND WORKMANSHIP FOR A PERIOD OF TWELVE (12) MONTHS FROM THE DATE OF PRACTICAL COMPLETION

7) ONE (1) DAY OPERATOR TRAINING FOR THE INSTALLED LIFT

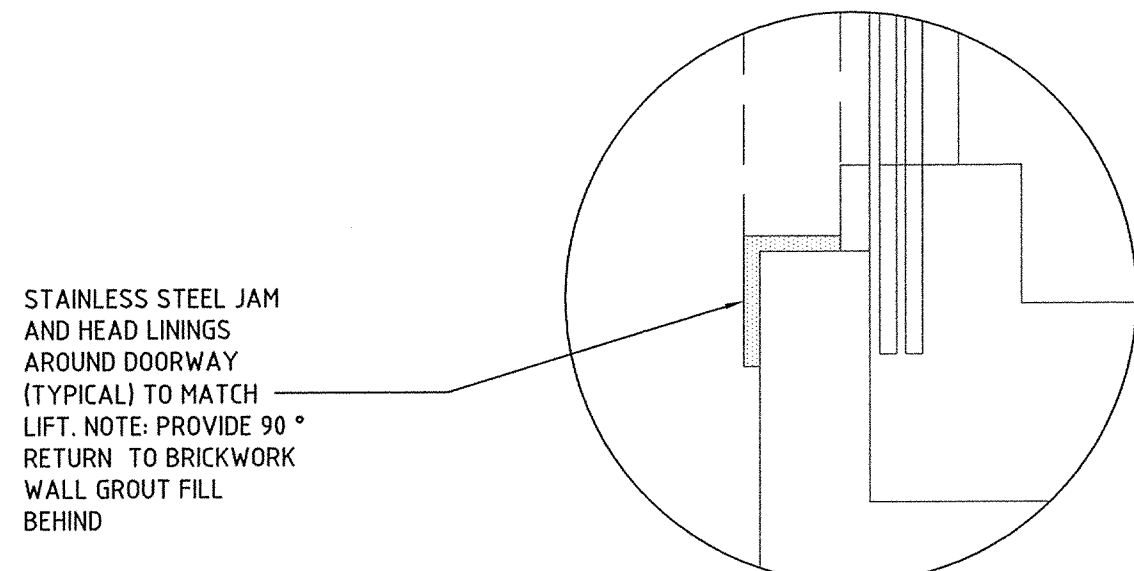
8) THE LIFT INSTALLATION SHALL COMPLY WITH THE LIFT CODES AS1735.2-2001 AND AS1735.12-1986.



LEVEL 0 LIFT SHAFT LAYOUT
SCALE 1 : 50

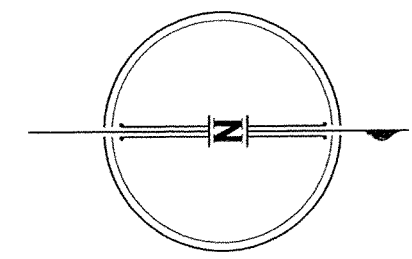


SECTION A - A
SCALE 1 : 50



STAINLESS STEEL JAM AND HEAD LININGS AROUND DOORWAY (TYPICAL) TO MATCH LIFT. NOTE: PROVIDE 90° RETURN TO BRICKWORK WALL GROUT FILL BEHIND

DETAIL
SCALE 1:20



orientation

FOR BUILDING APPROVAL AND TENDER NOT FOR CONSTRUCTION

issue	amendment	checked	date
A	ISSUED FOR BUILDING APPROVAL AND FOR TENDER	PE	22.04.2010
P1	PRELIMINARY ISSUE TO ARCHITECT FOR COMMENT	PE	16.04.2010

Peter Eustace & Associates
 CONSULTING ENGINEERS
 MECHANICAL, ELECTRICAL, FIRE AND LIFTS
 A.B.N. 92 054 208 156
 GOLD COAST OFFICE
 STREET ADDRESS : 14 NERANG STREET, NERANG - QLD. 4211
 POSTAL ADDRESS : P.O. BOX 712, NERANG - QLD. 4211
 TELEPHONE : (07) 5596 1425
 FACSIMILE : (07) 5596 1071
 NORTHERN N.S.W. OFFICE
 LEVEL 2, 105 MOLESWORTH STREET, LISMORE - N.S.W. 2480
 TELEPHONE : (02) 6622 5108
 EMAIL ADDRESS : eustace@CvthNet.com.au

project: **THE CORPORATION OF THE TRUSTEES OF THE ROMAN CATHOLIC ARCHDIOCESE OF BRISBANE**

project: **BER-P21 MULTI-PURPOSE CENTRE**

location: **ST PETER & PAULS PRIMARY 33 ALEXANDRA STREET BULIMBA**

drawing title: **LIFT SERVICES LEVEL 0 LIFT SHAFT LAYOUT, CONSTRUCTION NOTES, EXTANT OF WORK, SECTION A-A**

scale	date	drawn
AS SHOWN @ A1 SIZE SHEET	DECEMBER 2009	C.W.H

drawing number: **PE 2017/300**

issue: **A**